



Projeto Baleia Jubarte

Fishermen response to entanglements in Abrolhos Bank Brazil

DVM Milton C. C. Marcondes



PROGRAMA
**PETROBRAS
AMBIENTAL**



GOVERNO FEDERAL
BRASIL
PAÍS RICO E PAÍS SEM POBREZA



Projeto Baleia Jubarte

Humpback Whale in South Hemisphere



7 Breeding Stocks (A- G)

A – Western South Atlantic

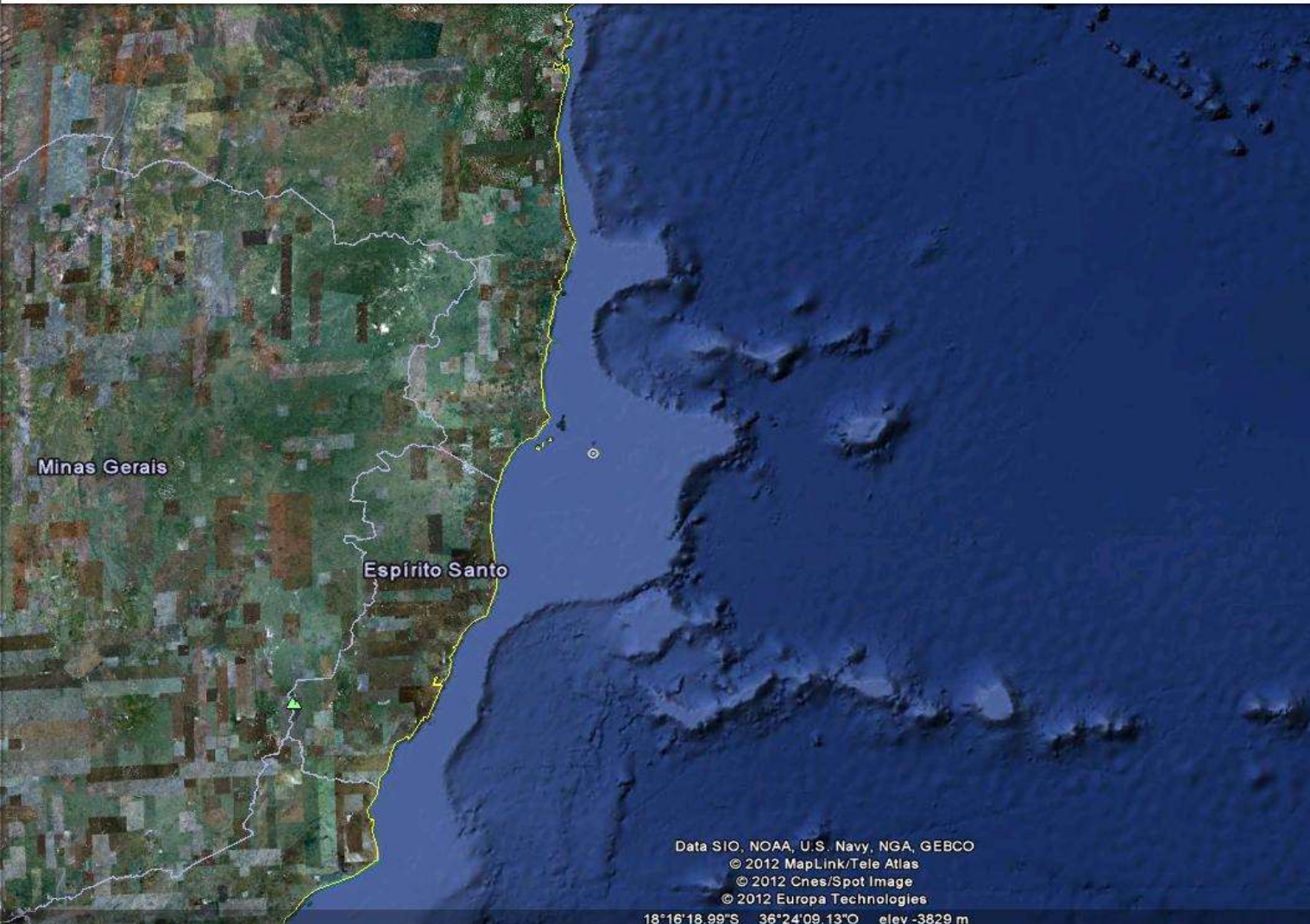




Projeto Baleia Jubarte

Abrolhos Bank

Abrolhos Bank is an enlargement of the continental shelf in Brazil (42,000 Km²)





Projeto Baleia Jubarte

Abrolhos Bank

Biodiversity Hot Spot

At least 1,300 species

19 species of Coral

> 266 species of fish

5 species of sea turtle

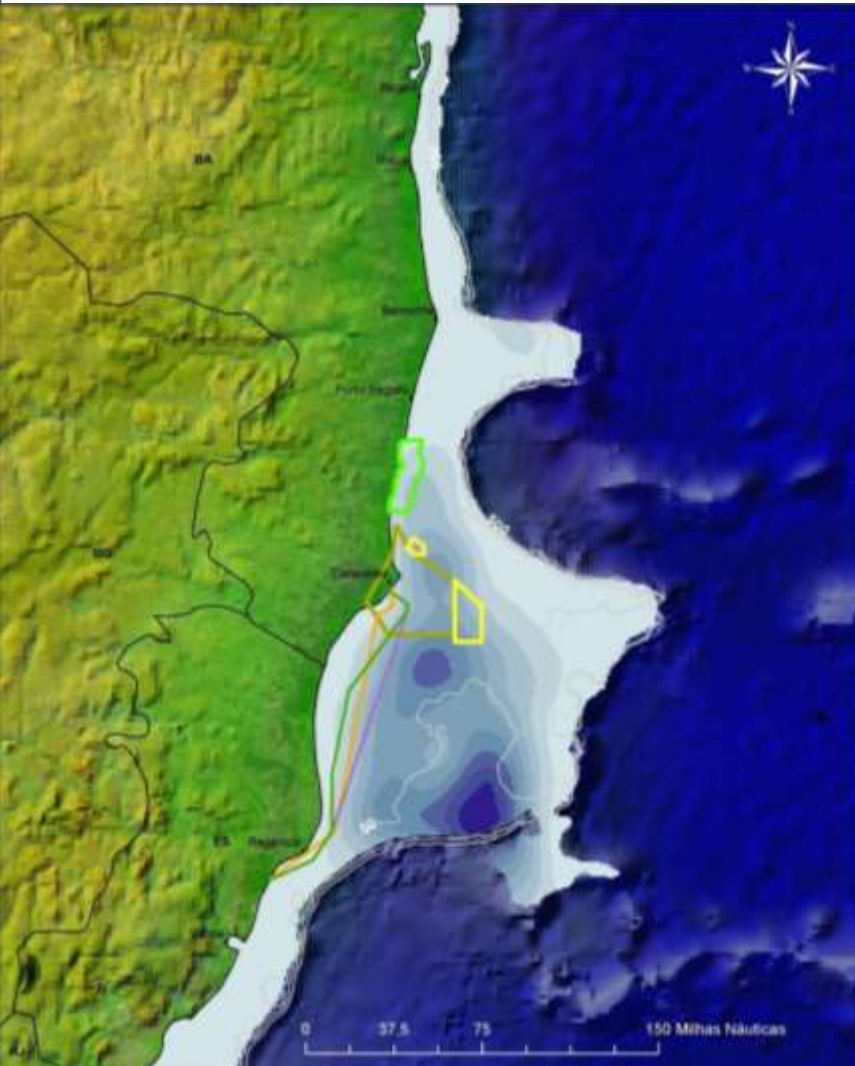




Projeto Baleia Jubarte

Abrolhos Bank

Abrolhos Marine National Park





Projeto Baleia Jubarte

Breeding Season in Abrolhos

July to November





Projeto Baleia Jubarte

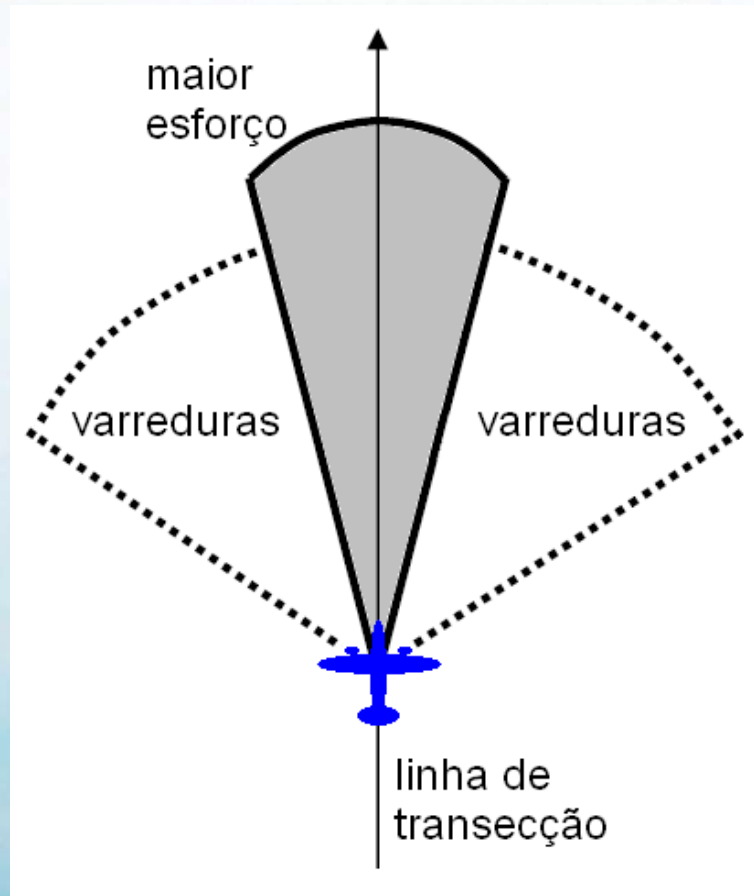
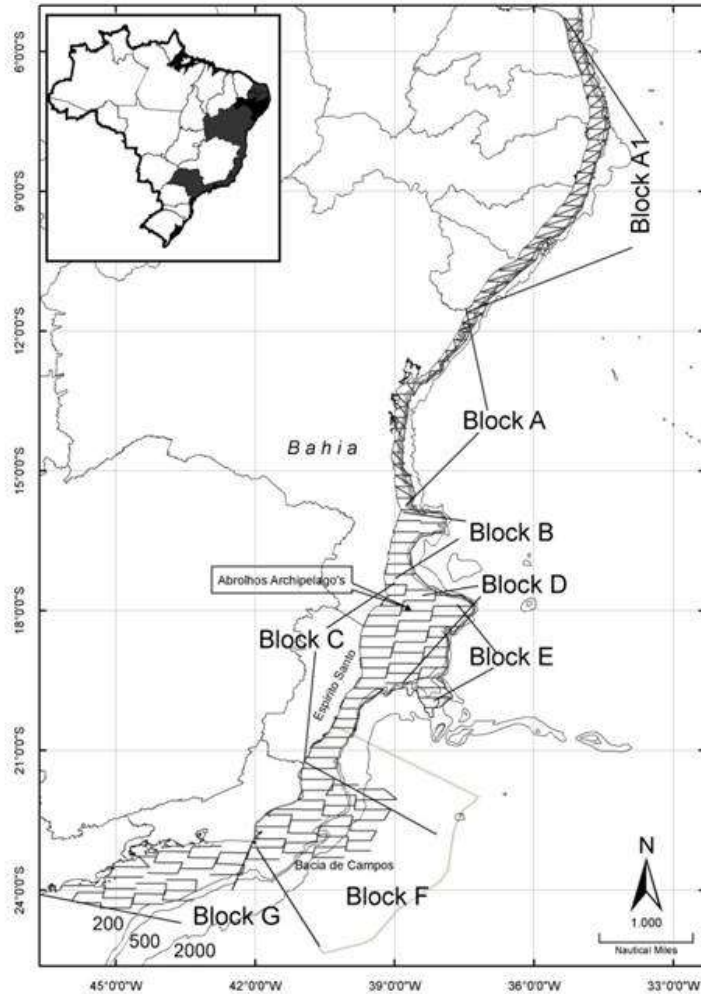
Humpback Whale – Aerial Survey





Projeto Baleia Jubarte

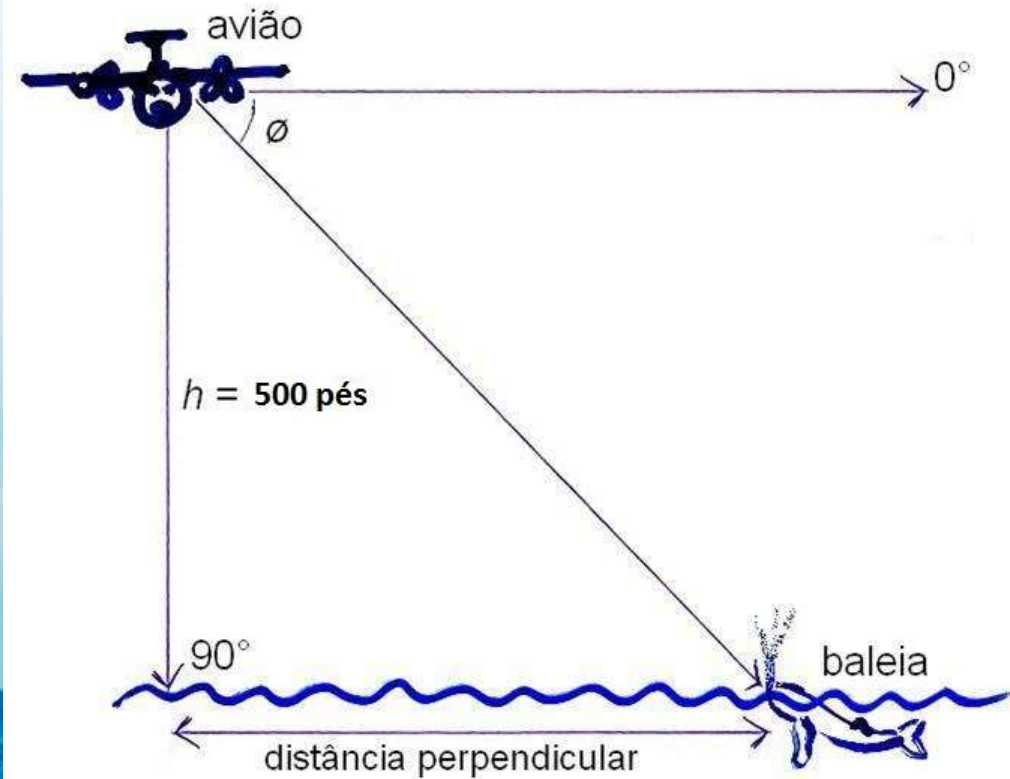
Humpback Whale – Aerial Survey





Projeto Baleia Jubarte

Humpback Whale – Aerial Survey





Projeto Baleia Jubarte

Humpback Whale – Population Recovery

Year	Area	Population Size
2001*	BA/ES	2,229 (CV 0.31)
2002**	BA/ES	3,396 (CV 0.14)
2003**	BA/ES	3,661 (CV 0.13)
2004**	BA/ES	5,353 (CV 0.12)
2005**	BA/ES RN/RJ	5,973 (CV 0.12) 6,404 (CV 0.11)
2008***	RN/RJ	9,330 (CV 0.16)
2011****	SE/RJ	11,418 (CV 0.05)
2015	RN/RJ	17,010 (CV 0.24)



* Andriolo *et al.* 2005

**Andriolo *et al.* 2010

*** Wedekin *et al.* 2010

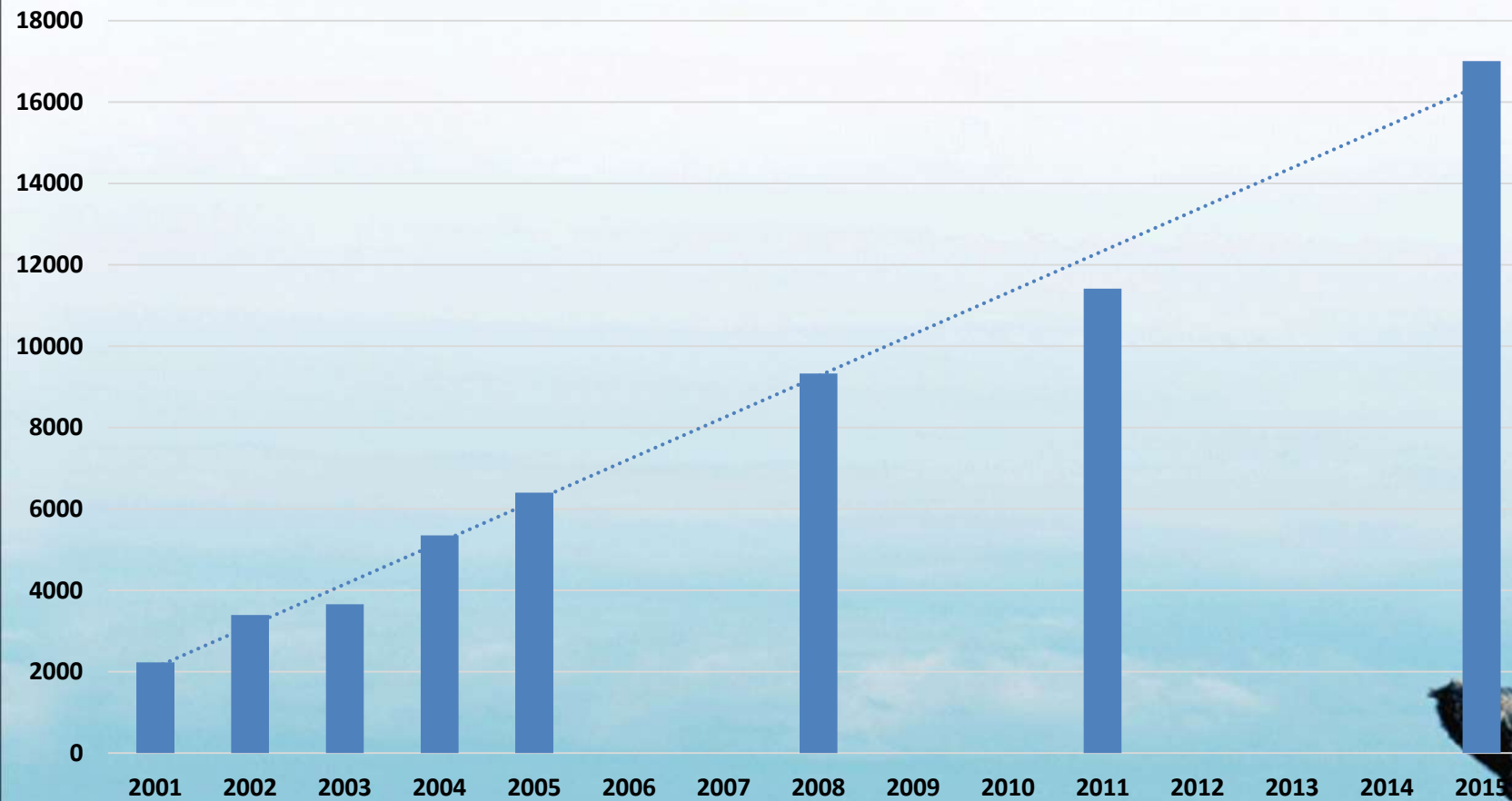
**** Pavanato *et al.* 2012



Projeto Baleia Jubarte

Humpback Whale – Population Recovery

População de Jubartes no Brasil





Projeto Baleia Jubarte

Entanglements





Projeto Baleia Jubarte

Entanglements

- 2007 – Start talking with fishermen in Caravelas - BA



Proposal: “defeso” - Temporary Ban

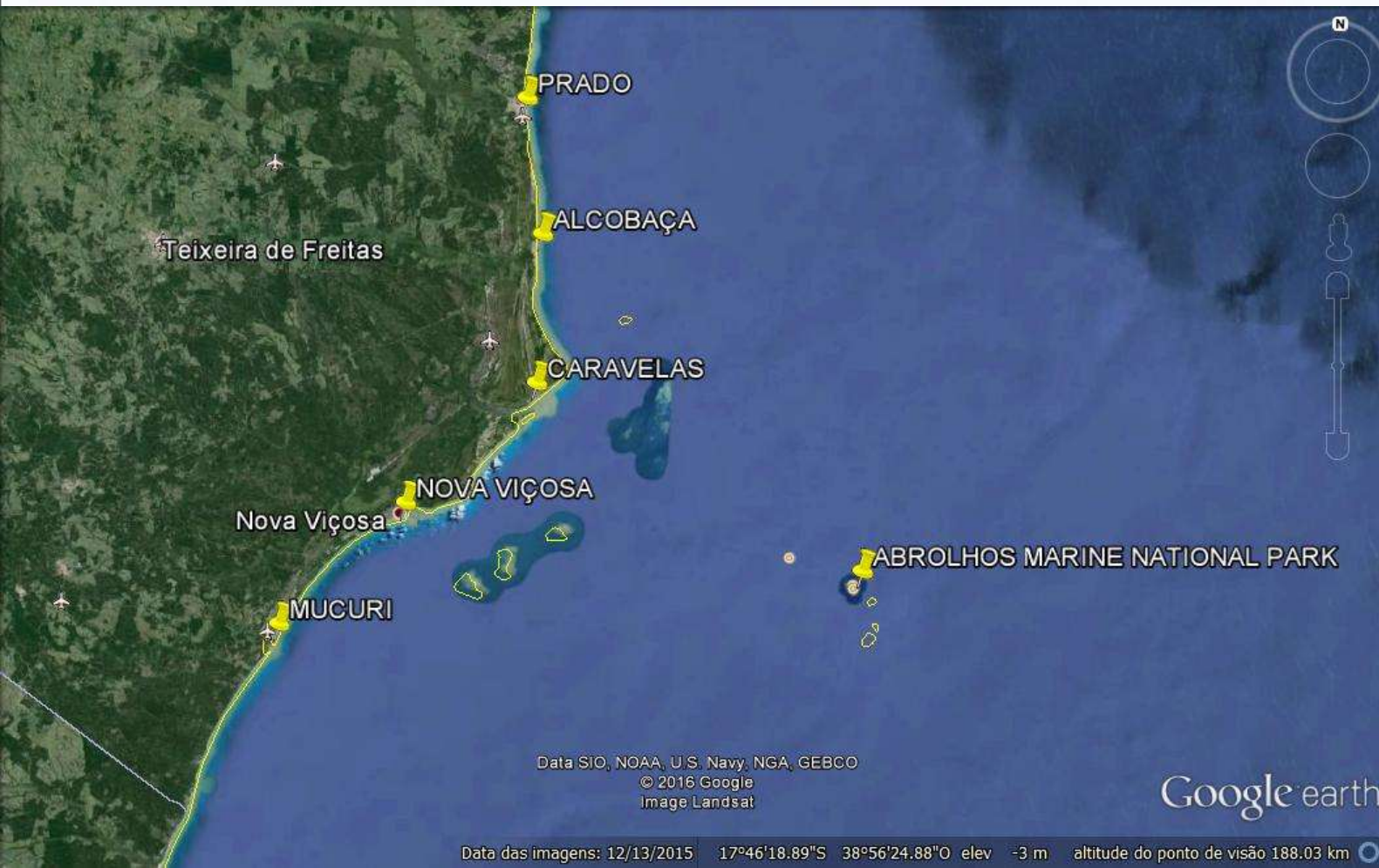




Projeto Baleia Jubarte

Entanglements

- 2013 – Interview fishermen in the South of Bahia State





Projeto Baleia Jubarte

Entanglements

- 2013 – Interview fishermen in the South of Bahia State



Interviews (N= 153)

36 - Prado

40 - Alcobaça

21 - Caravelas

37 - Nova Viçosa

19- Mucuri



Entanglements

- 2013 – Interview fishermen in the South of Bahia State

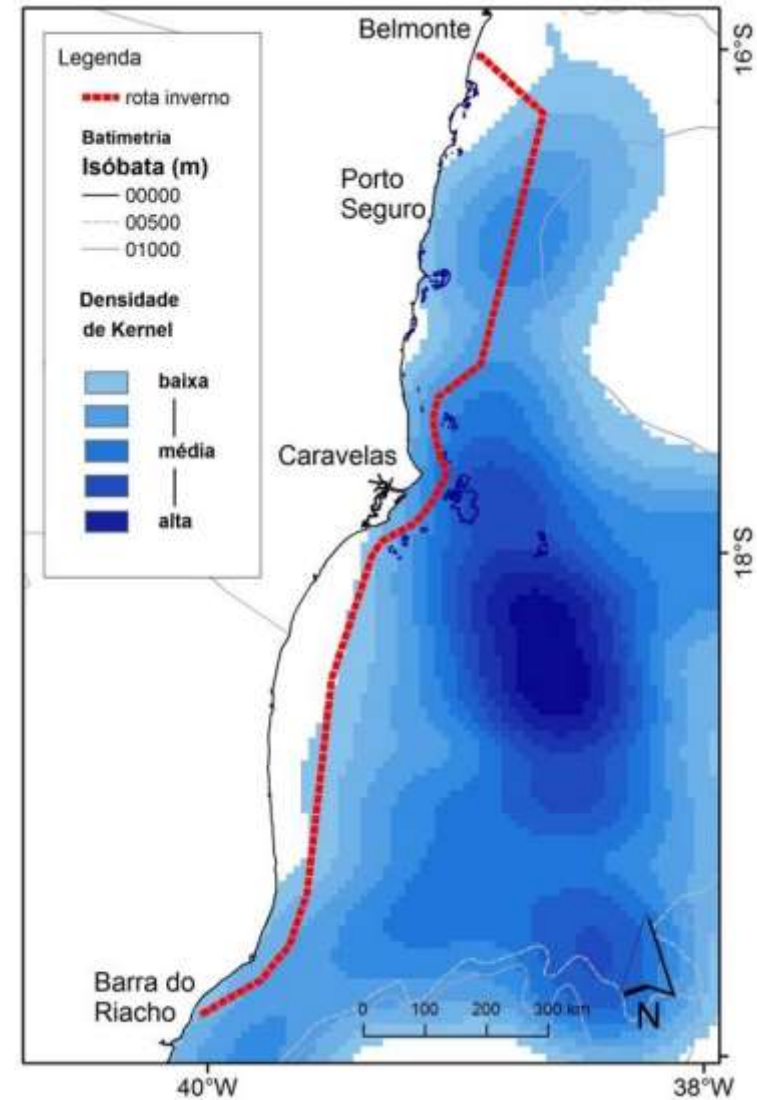
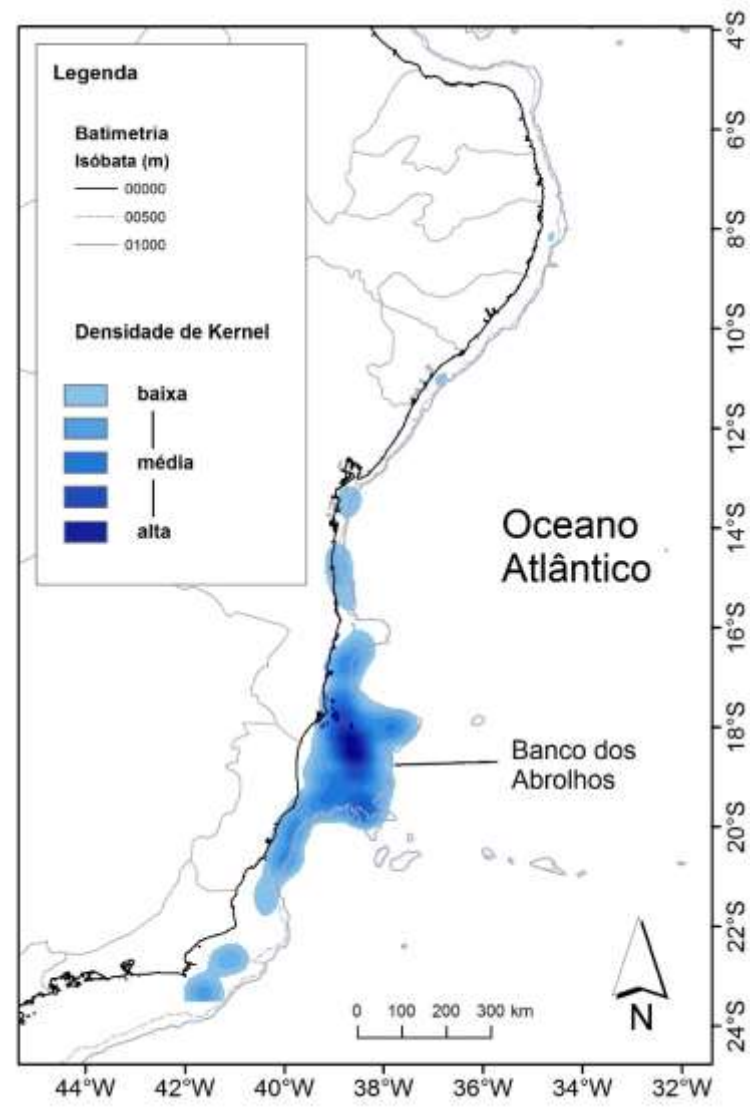
Community	ENTANGLEMENT		SHIP STRIKE	
	YES	NO	YES	NO
Prado	50,00%	50,00%	10,53%	84,21%
Alcobaça	44,74%	55,26%	10,53%	89,47%
Caravelas	40,91%	54,55%	13,64%	81,82%
Nova Viçosa	39,02%	60,98%	4,88%	92,68%
Mucuri	10,53%	89,47%	0,00%	100,00%





Projeto Baleia Jubarte

Humpback Whale Distribution





Projeto Baleia Jubarte

Entanglements

- Solutions adopted by some fishermen
 - Change from gillnet to longline or line and hook
 - Change from surface longline to bottom longline
 - Change the diameter of the rope used to anchor the longline





Projeto Baleia Jubarte

Entanglements

- Solutions adopted by some fishermen
- Change fishing grounds



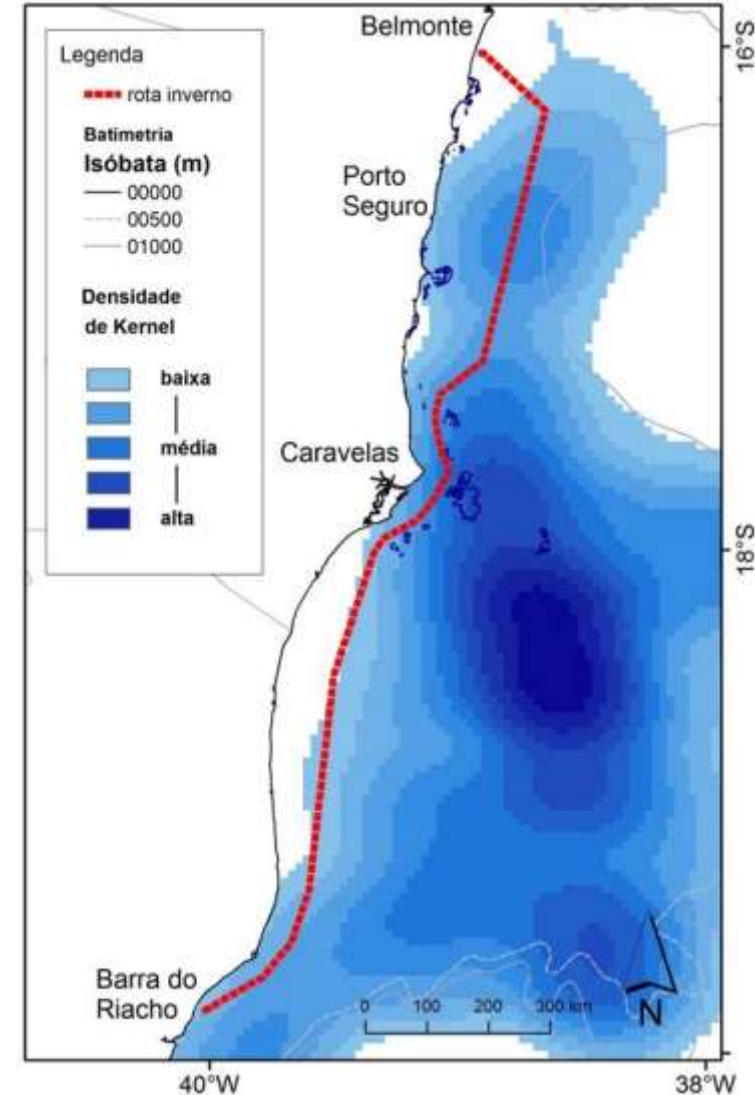


Projeto Baleia Jubarte

Entanglements

2016

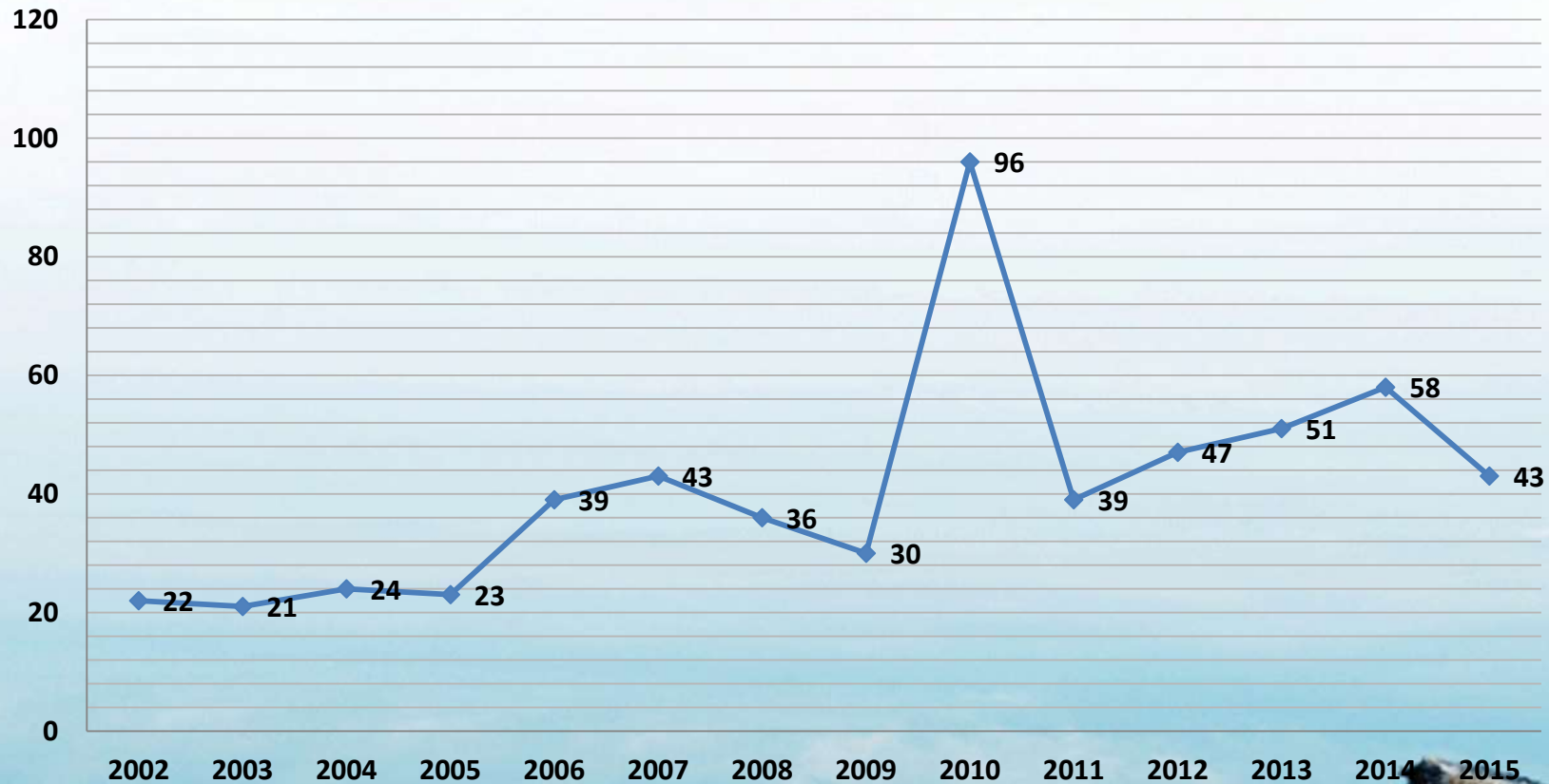
Fishermen in Caravelas ask to the Institute to produce a map with the distribution of the whales.





Projeto Baleia Jubarte

Strandings of Humpback Whale In Brazil





Projeto Baleia Jubarte

Humpback Whale Strandings





Projeto Baleia Jubarte

Humpback Whale Strandings





Projeto Baleia Jubarte

Sponsors



<https://www.facebook.com/ibaleiajubarte>

<http://www.baleiajubarte.org.br>

